



07 Catalogue

CLOSETS

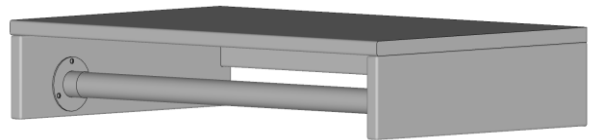
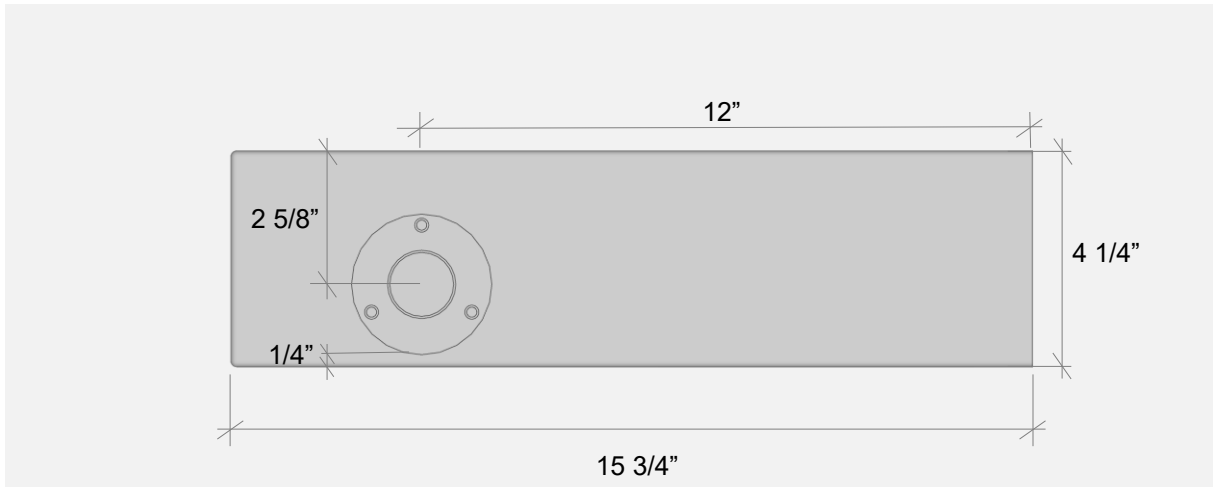
2021



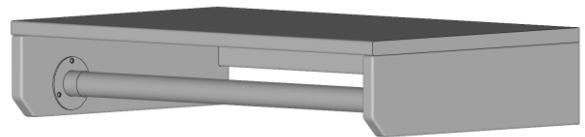
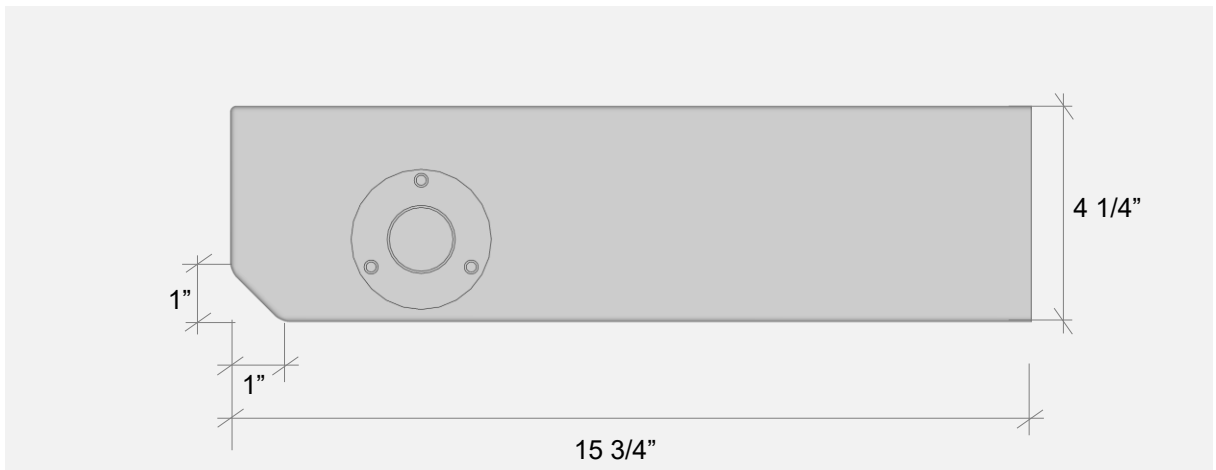


CLOSET CLEATS

CLOSET SIDE CLEAT FOR CLOSET ROD (CSDCR)



CLOSET SIDE CLEAT FOR CLOSET ROD (CSDC45)

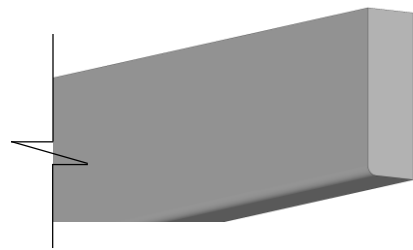
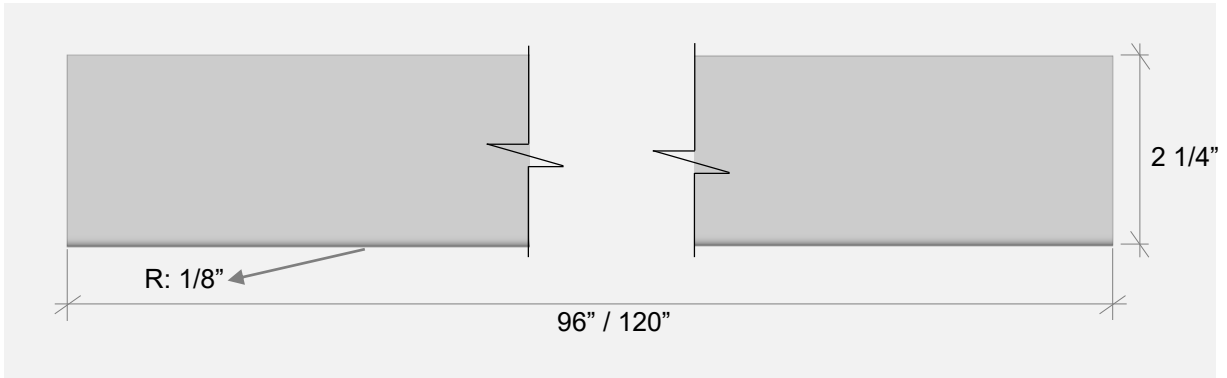


NOTE:
- 1/8" RADIUS IN EXPOSED EDGES

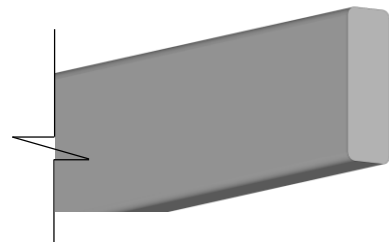
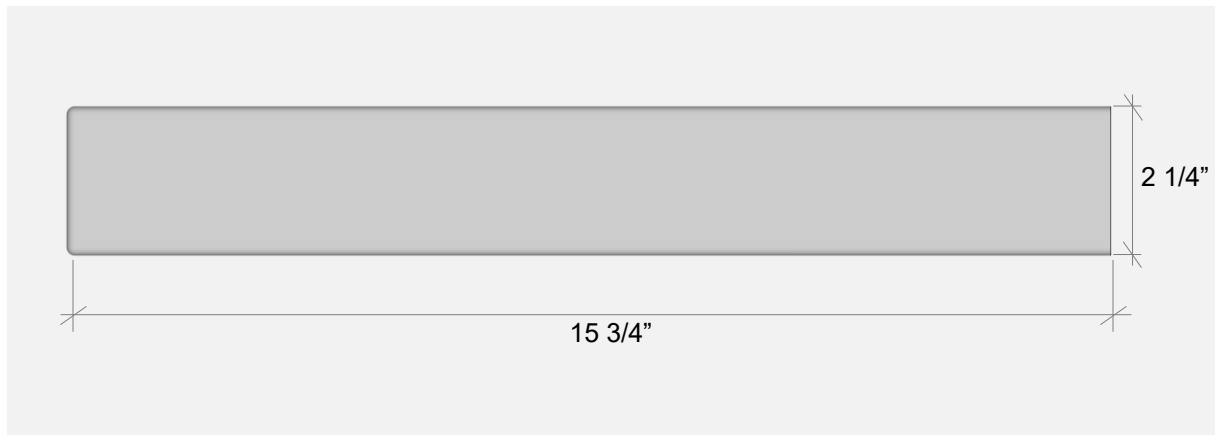


CLOSET CLEATS

CLOSET BACK WALL CLEATS (CBWC)



CLOSET SHELF CLEATS (CSCS)

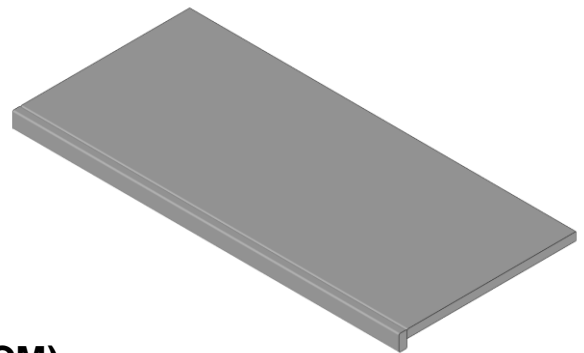
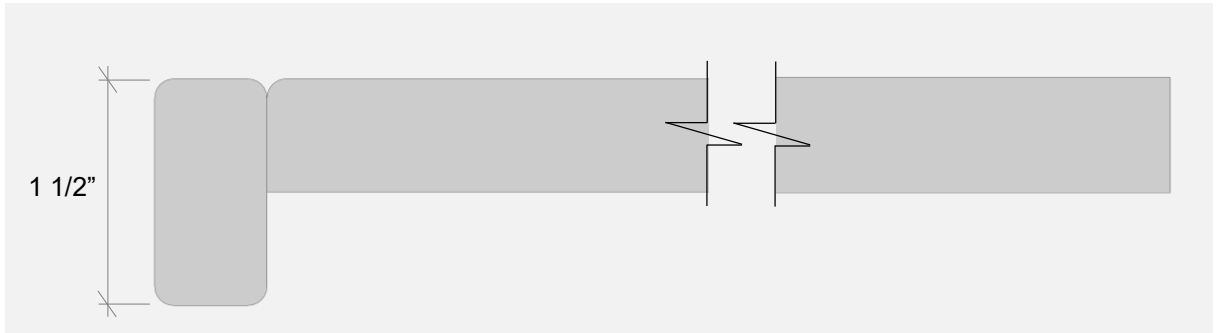


NOTE:
- 1/8" RADIUS IN EXPOSED EDGES

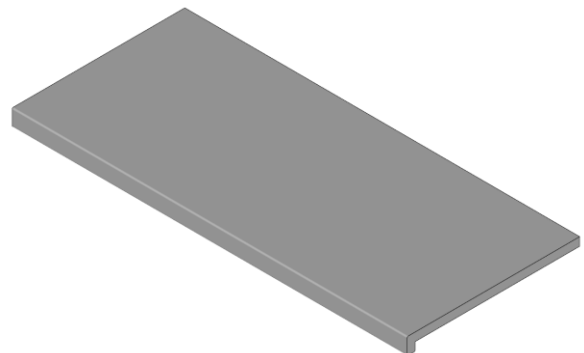
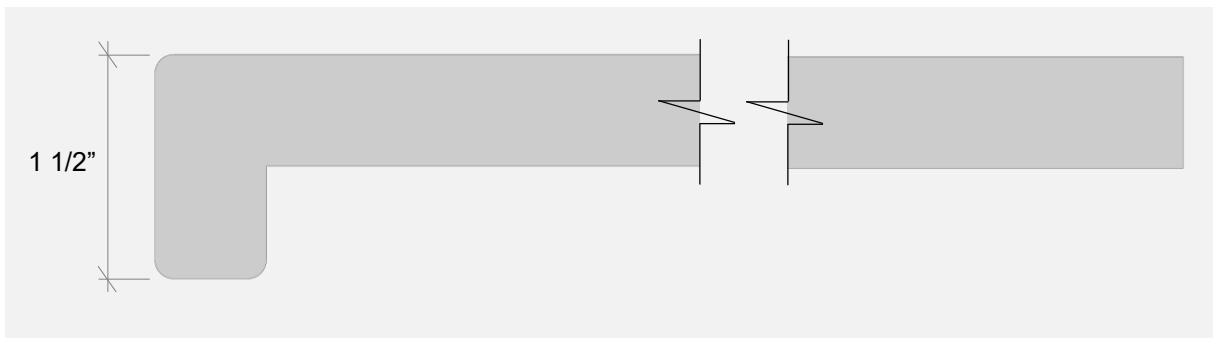


CLOSET CLEATS

CLOSET SHELF CLEAT 1/8" RADIUS (CSCR)



CLOSET SHELF CLEAT MITER (CSCM)

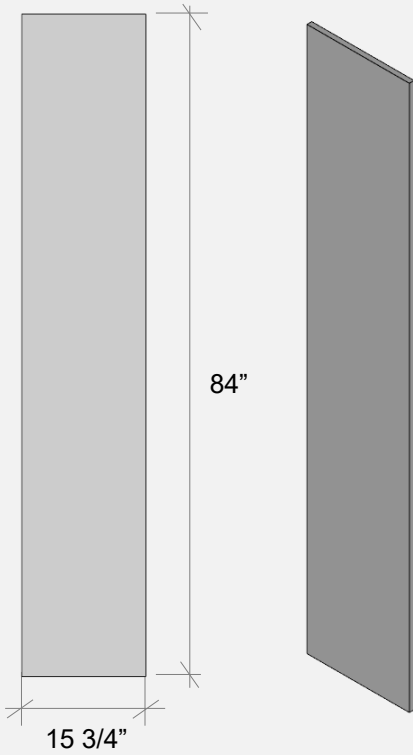


NOTE:
- 1/8" RADIUS IN EXPOSED EDGES

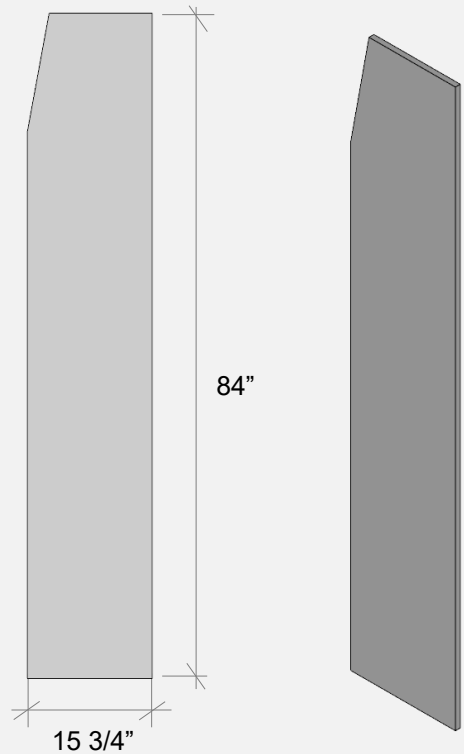


CLOSET GABLES

CLOSET SHELF GABLE (CSGS)



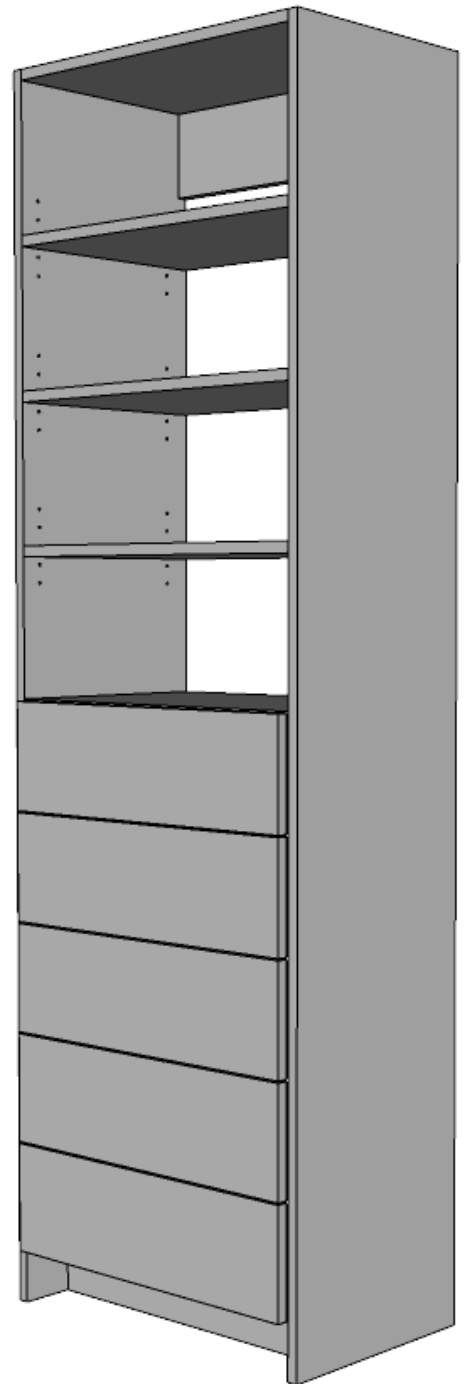
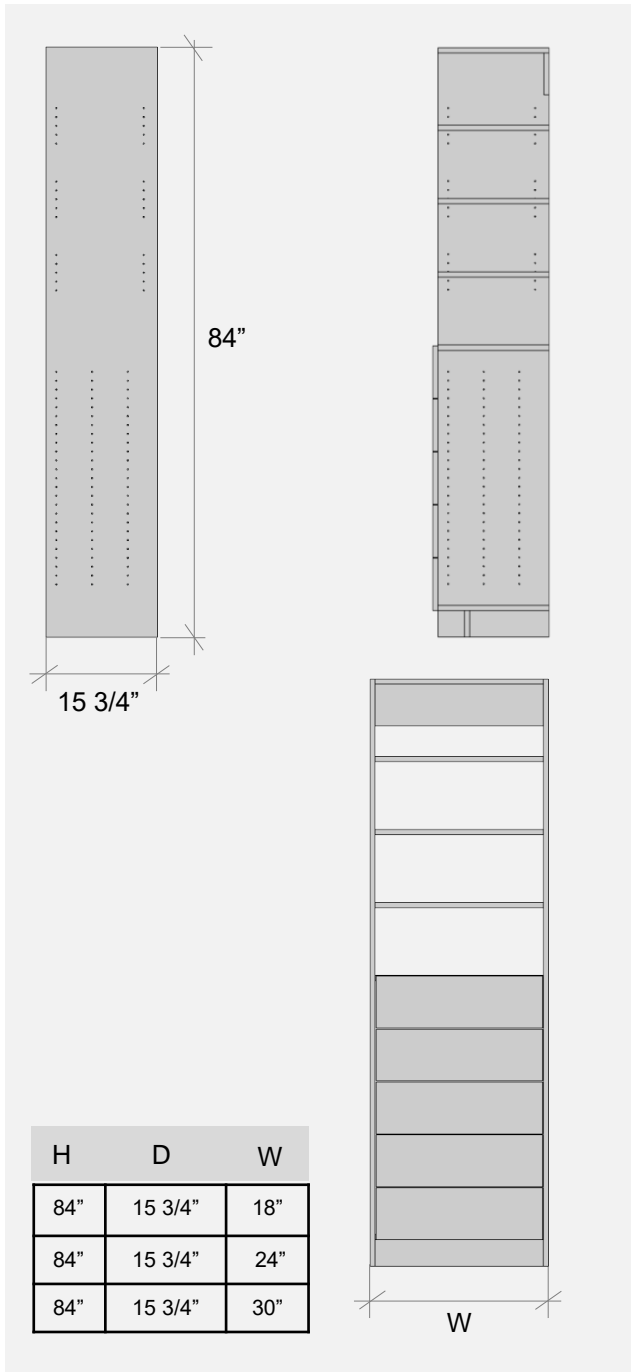
CLOSET SHELF GABLE (CSGA)



NOTE:
- DRILLING TEMPLATE 1/4" MDF.

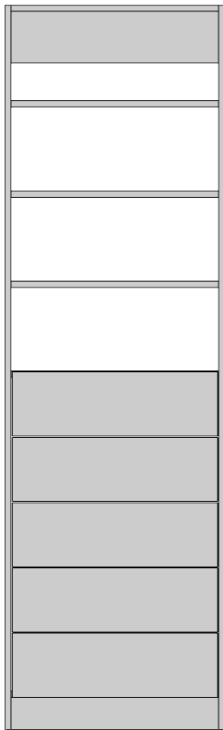


HUTCH DRAWER - 84"



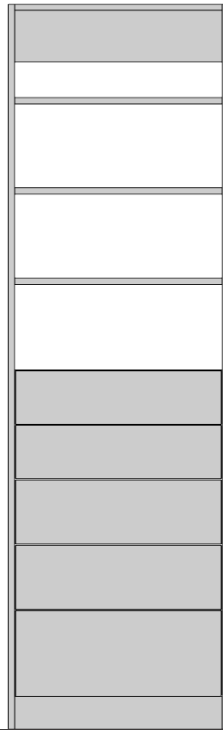


HUTCH DRAWER - 84"



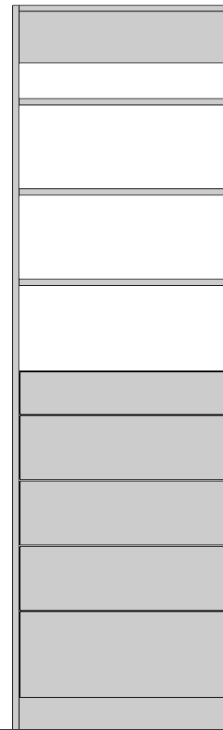
189mm / ≈8"
189mm / ≈8"
189mm / ≈8"
189mm / ≈8"
221mm / ≈9"

HD88889-84-[[?]]



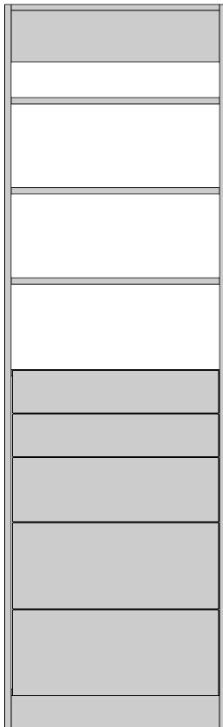
157mm / ≈6"
157mm / ≈6"
189mm / ≈8"
189mm / ≈8"
285mm / ≈11"

HD66881-84-[[?]]



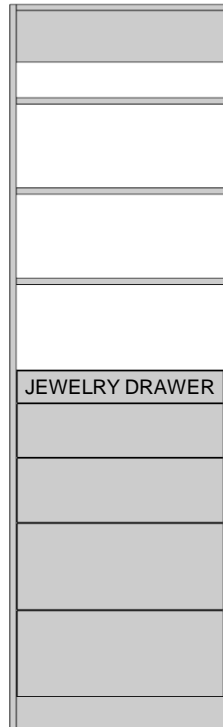
125mm / ≈5"
189mm / ≈8"
189mm / ≈8"
189mm / ≈8"
285mm / ≈11"

HD58881-84-[[?]]



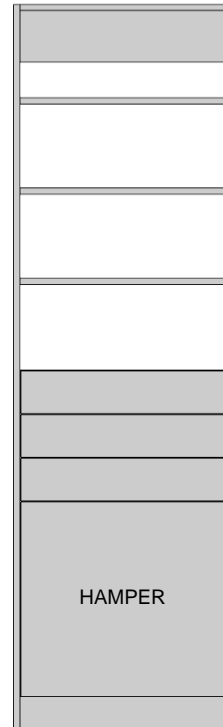
125mm / ≈5"
125mm / ≈5"
189mm / ≈8"
253mm / ≈10"
285mm / ≈11"

HD55801-84-[[?]]



JEWELRY DRAWER 93mm / ≈4"
157mm / ≈6"
189mm / ≈7"
253mm / ≈10"
285mm / ≈11"

HD46701-84-[[?]]



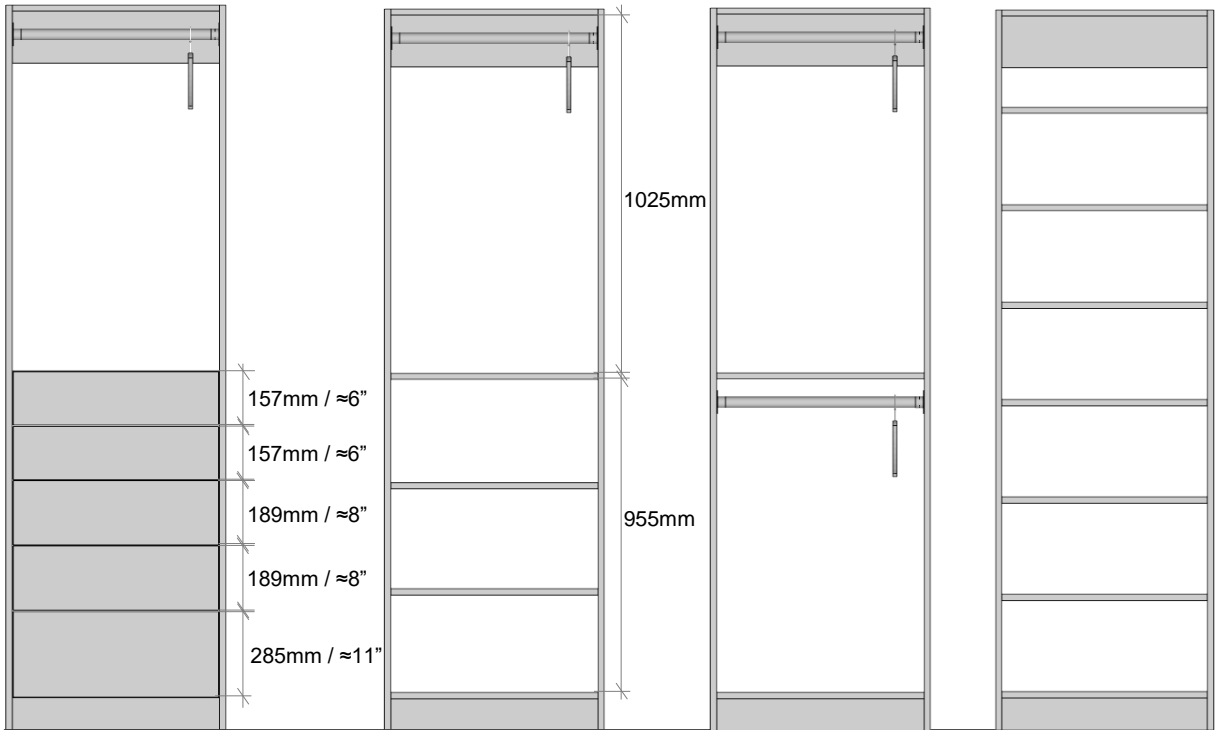
125mm / ≈5"
125mm / ≈5"
125mm / ≈5"
HAMPER 605mm / ≈24"

HD555HA-84-[[?]]

NOTE: [[?]] = AVAILABLE IN WIDTHS 18 ", 24 ", 30 ". SEE PREVIOUS PAGE.



HUTCH DRAWER - 84"

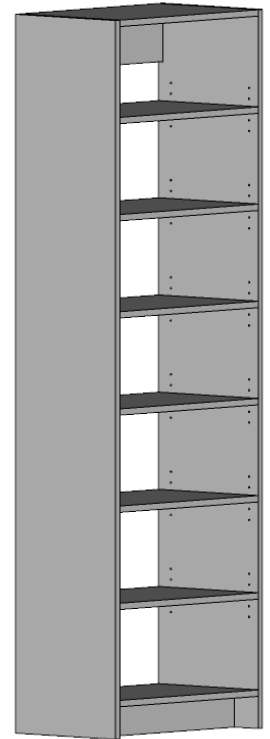
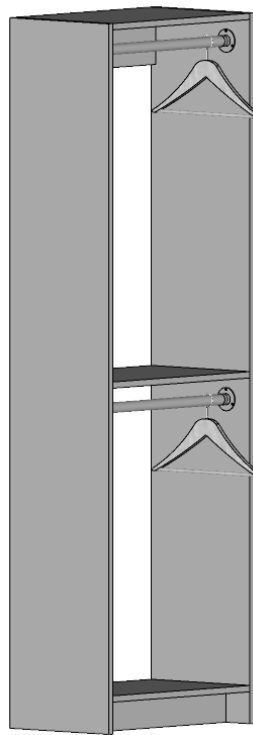
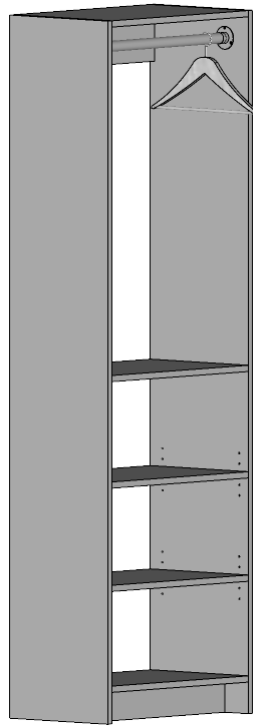
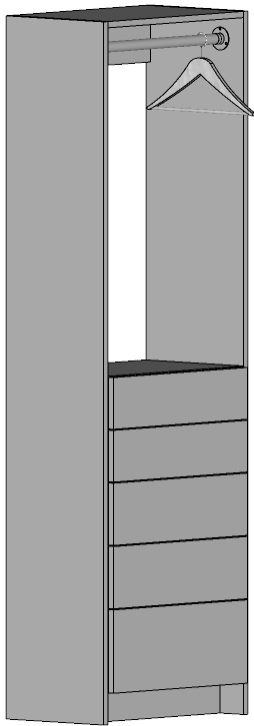


HD66881-SH-84-[[?]]

OS-SH-84-[[?]]

DH-84-[[?]]

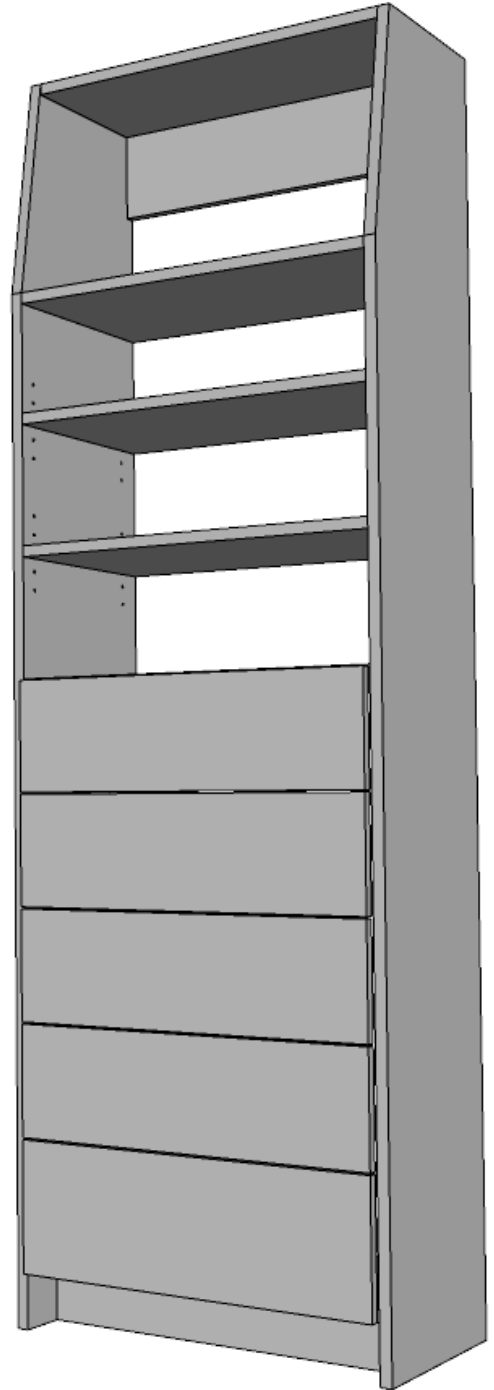
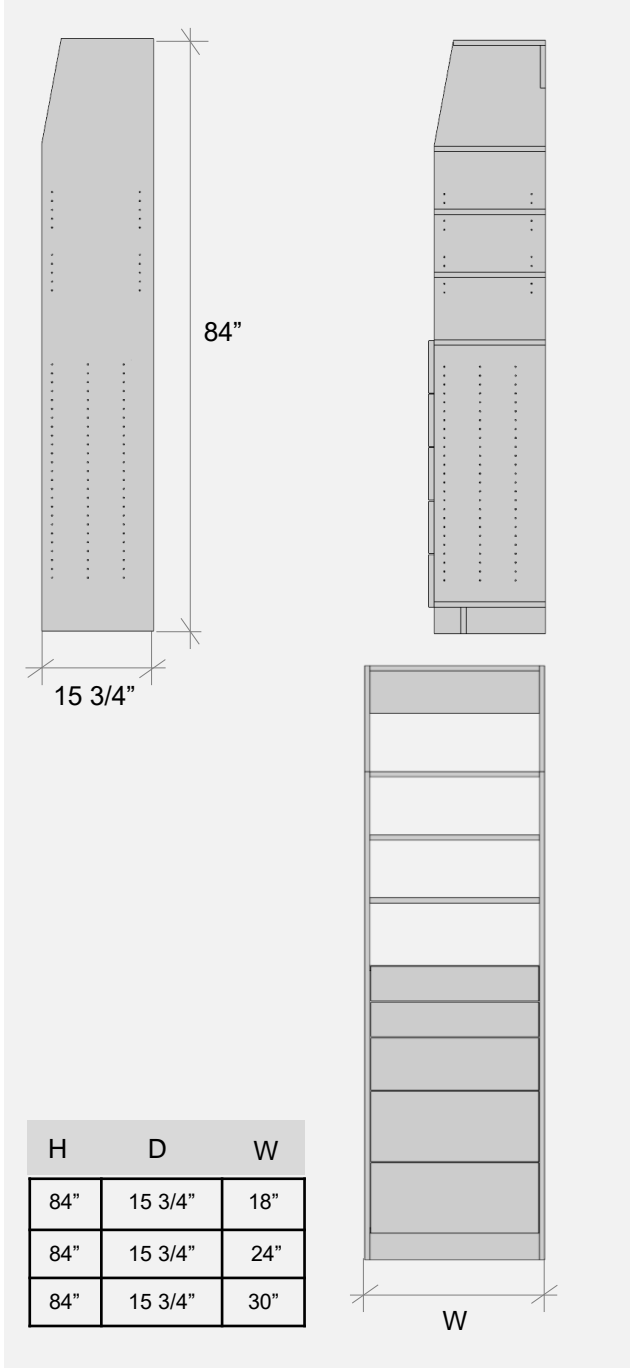
OS-84-[[?]]



NOTE: [[?]] = AVAILABLE IN WIDTHS 18", 24", 30". SEE PREVIOUS PAGE.

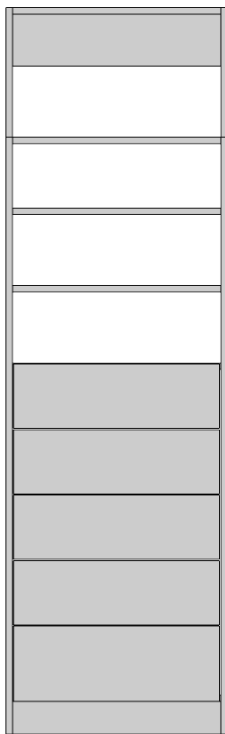


HUTCH DRAWER ANGLE - 84"

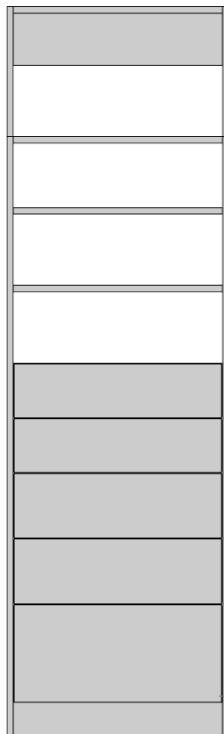




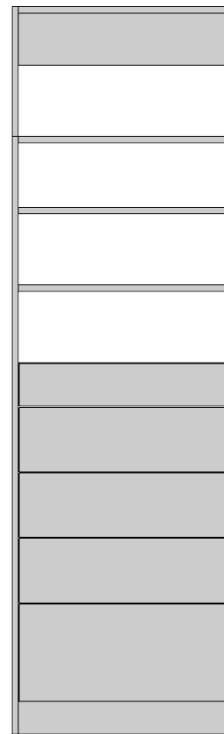
HUTCH DRAWER ANGLE - 84"



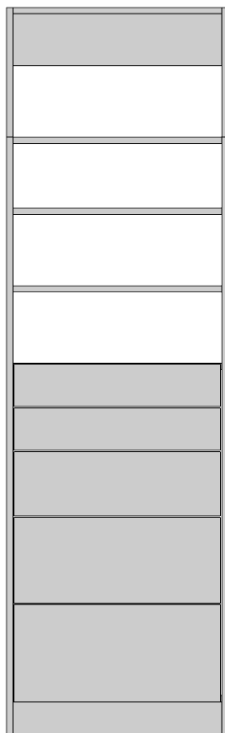
HDA88889-84-[[?]]



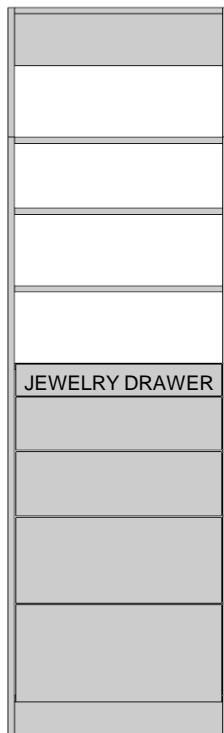
HDA66881-84-[[?]]



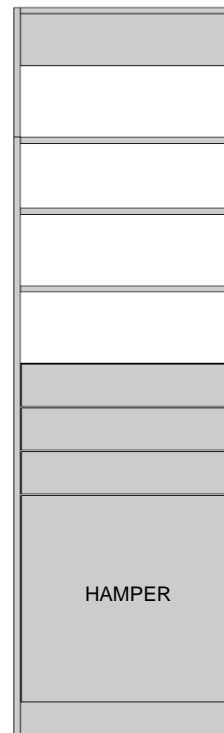
HDA58881-84-[[?]]



HDA55801-84-[[?]]



HDA46701-84-[[?]]

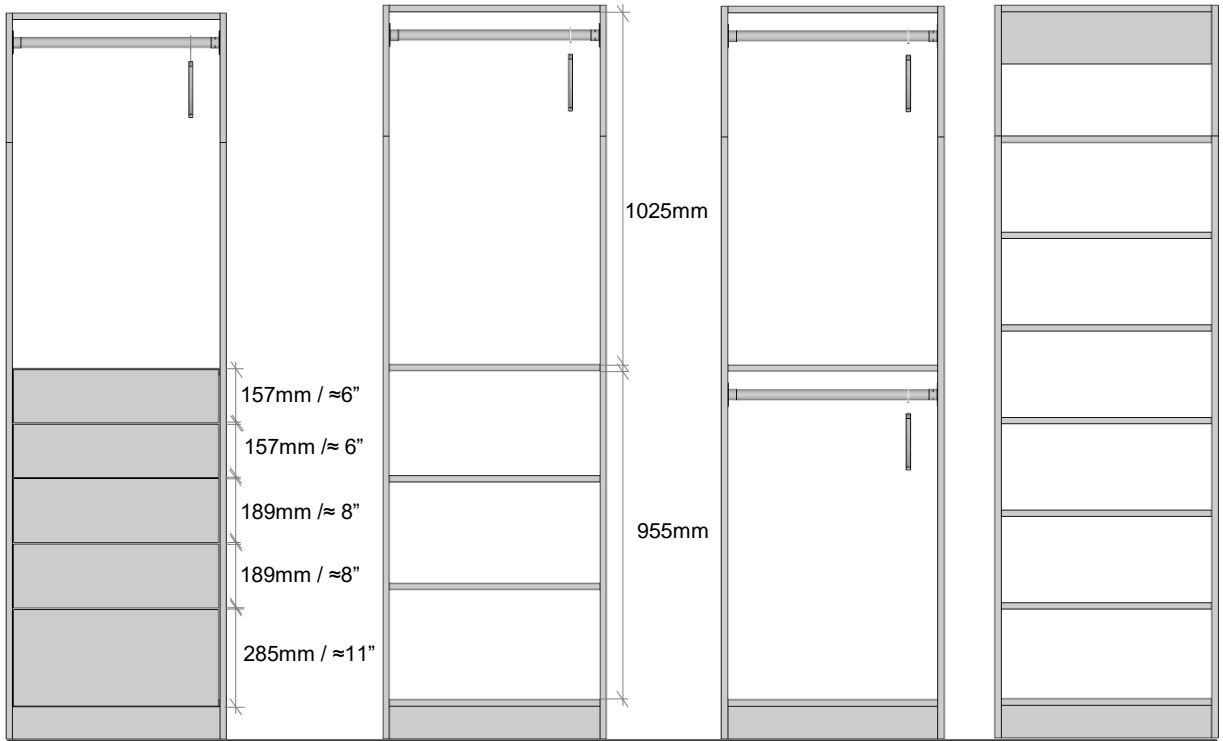


HDA555HA-84-[[?]]

NOTE: [[?]] = AVAILABLE IN WIDTHS 18 ", 24", 30 ". SEE PREVIOUS PAGE.



HUTCH DRAWER ANGLE - 84"

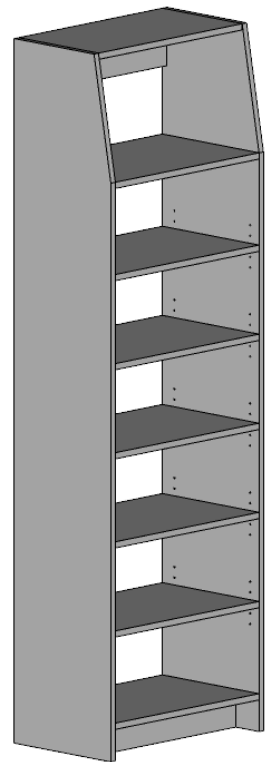
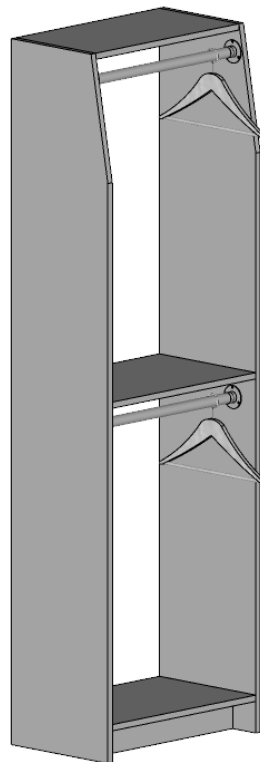
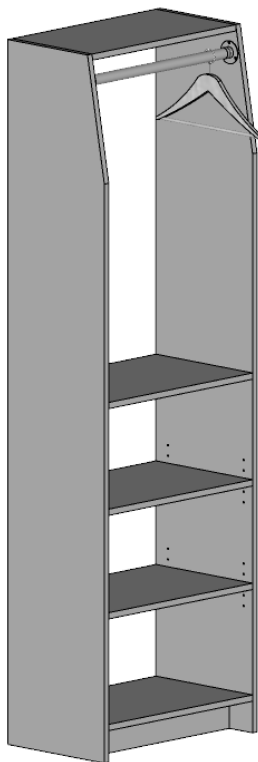
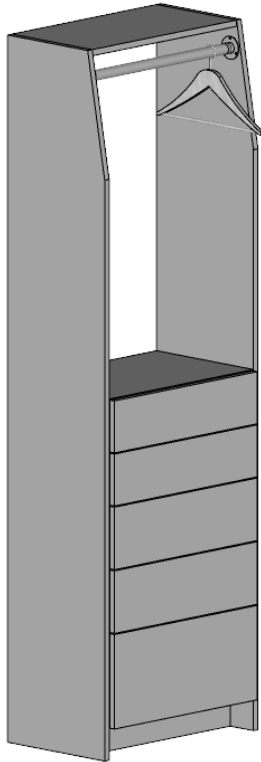


HDA66881-SH-84-[??]

OSA-SH-84-[??]

DHA-84-[??]

OSA-84-[??]

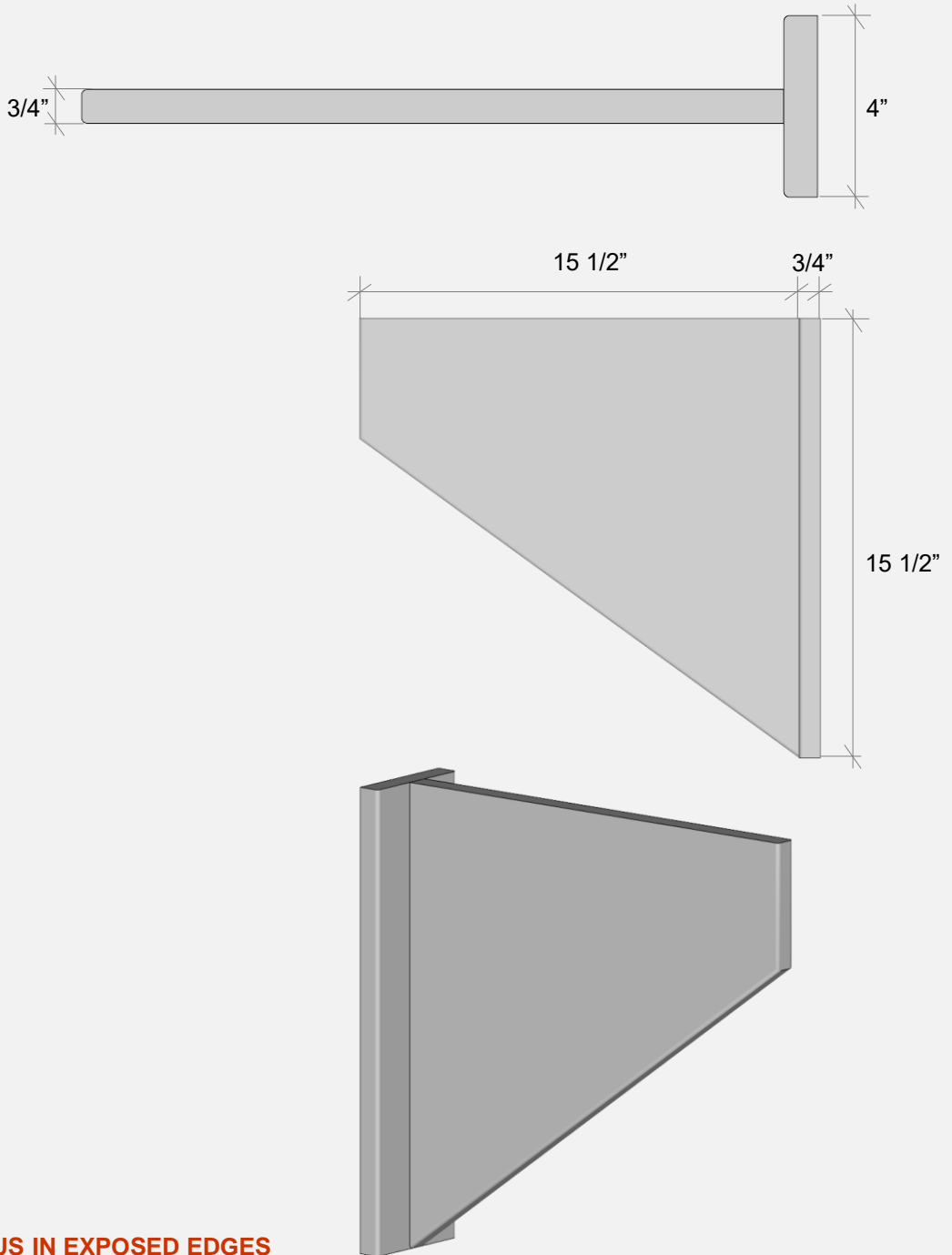


NOTE: [??] = AVAILABLE IN WIDTHS 18", 24", 30". SEE PREVIOUS PAGE.



CLOSET BRACKET

CLOSET ROD BRACKET(CRB)

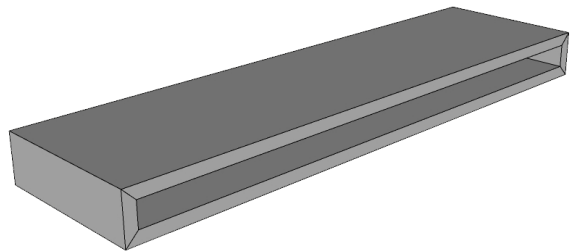
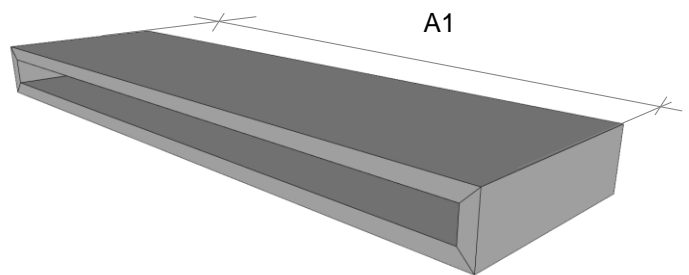
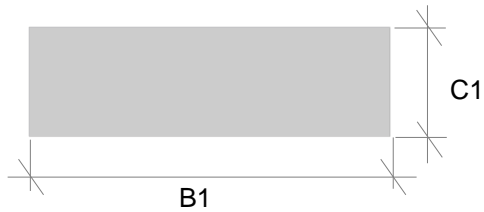


NOTE:
- $1/8"$ RADIUS IN EXPOSED EDGES

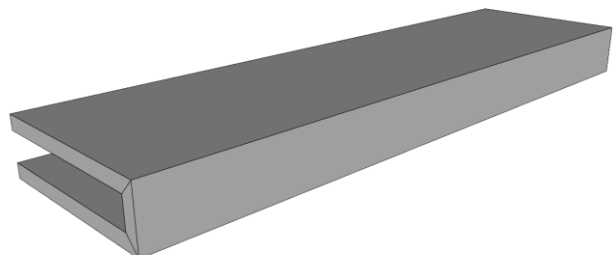
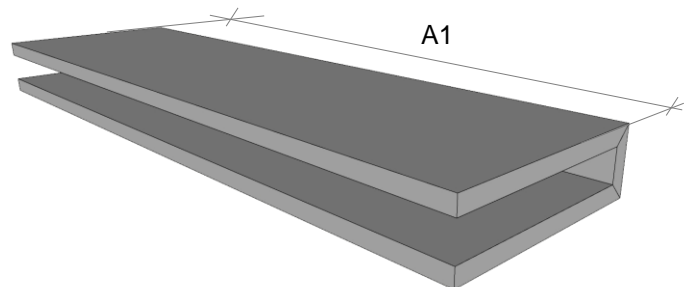
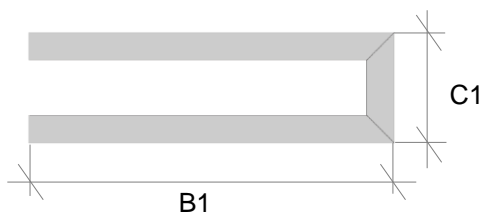


FLOATING SHELVES

CLOSED BOTH ENDS (FSCB)



OPEN BOTH ENDS (FSOB)

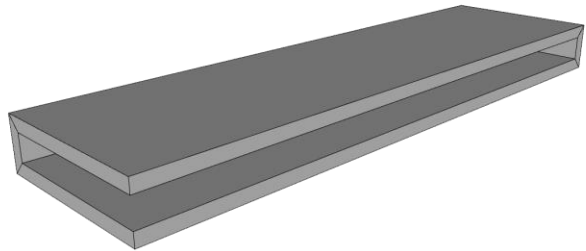
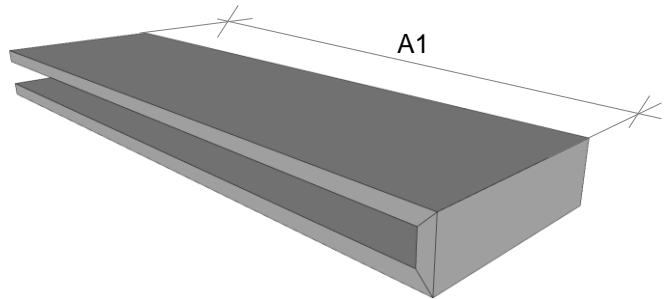
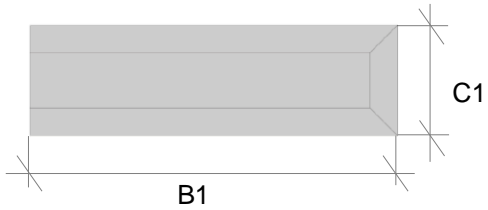


- NOTES:**
- ALL EXPOSED FACES ARE FINISHED.
 - SEE BRACKET INFO PAGE

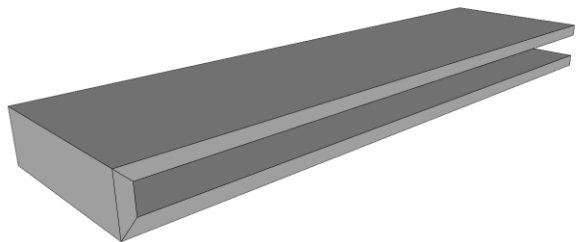
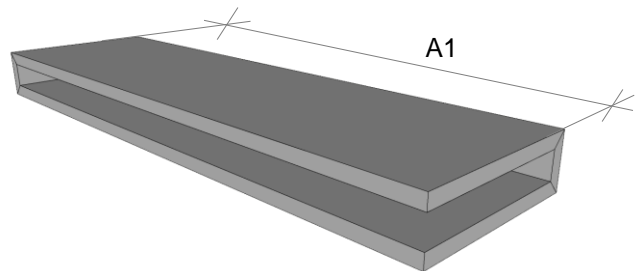
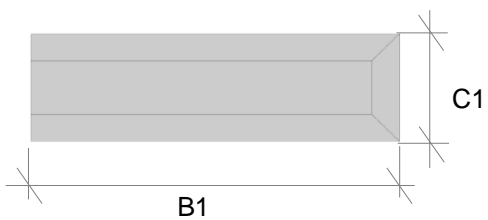


FLOATING SHELVES

OPENED RIGHT END – CLOSED LEFT (FSOR)



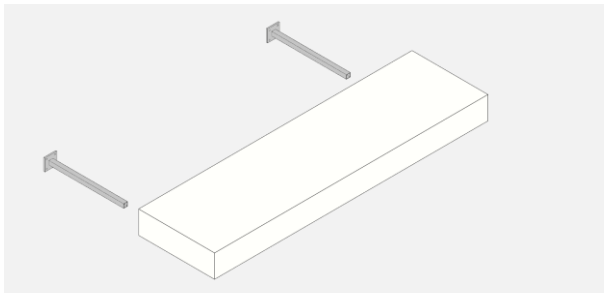
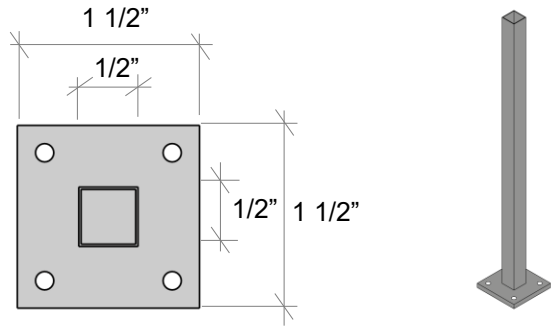
OPENED LEFT END – CLOSED RIGHT (FSOL)



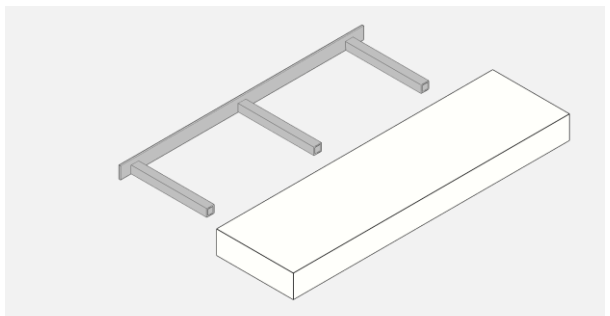
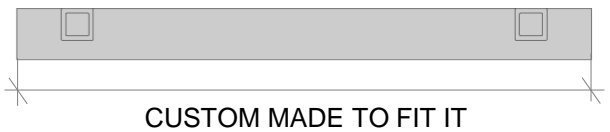
- NOTES:**
- ALL EXPOSED FACES ARE FINISHED.
 - SEE BRACKET INFO PAGE

SHELVES BRACKETS

FLOATING SHELF BRACKET (FSB)



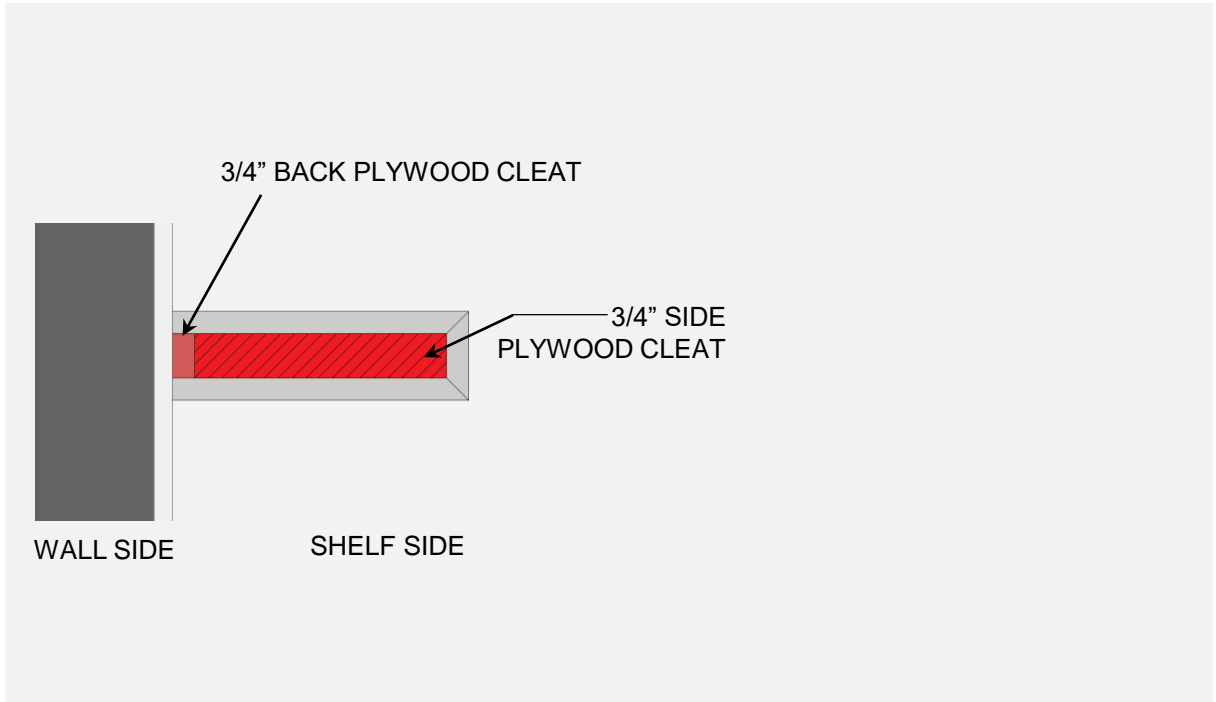
HEAVY DUTY FLOATING SHELF BRACKET (FSBHD)





SHELVES CLEAT

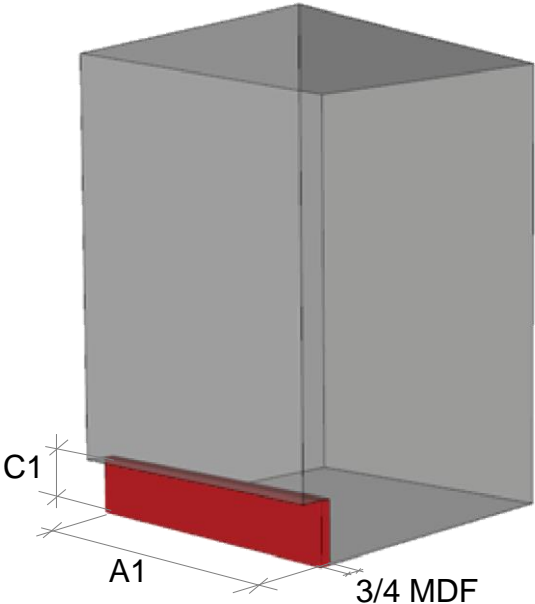
FLOATING SHELF CLEAT (FSC)





TOE KICK

TOE KICK (TK)





1323 43rd Ave SE. Calgary, Alberta. T2G 2A3



(403) 276.7399



(403)276.6650



sales@outsoucecc.com



www.outsoucecc.com